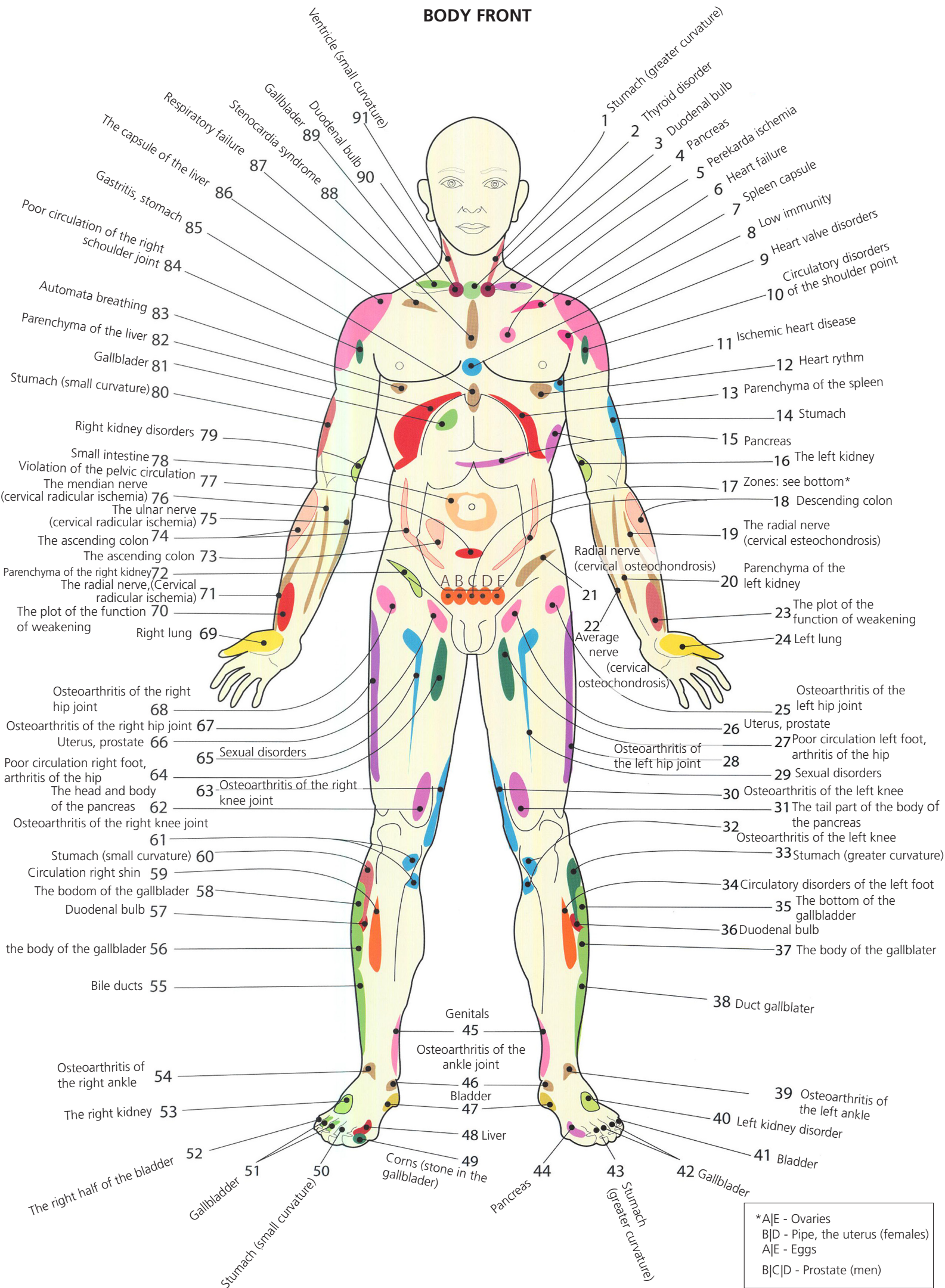
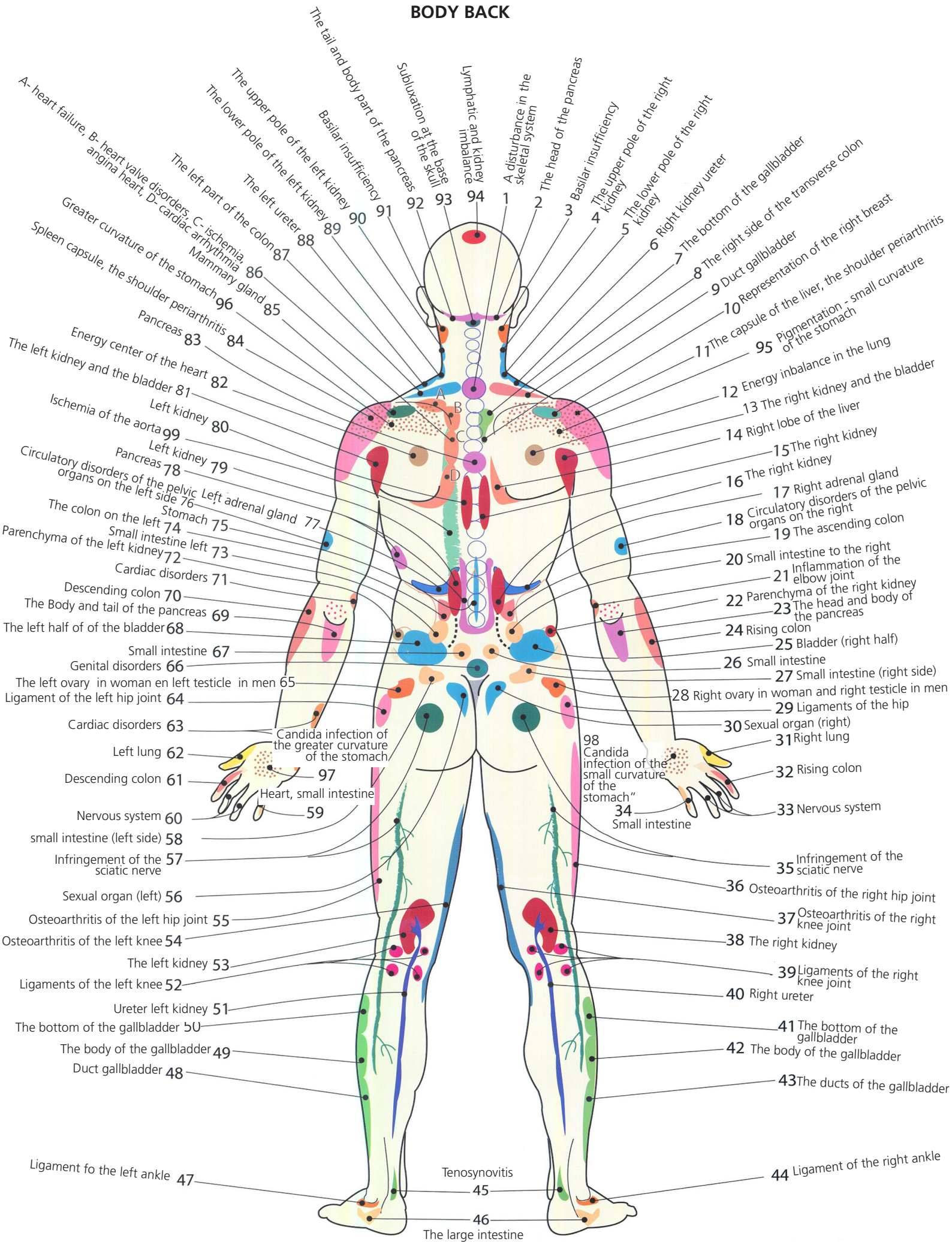


BODY FRONT



DIAGNOSTIC REPRESENTATION OF FUNCTIONAL DISORDERS OF THE INTERNAL ORGANS OF THE HUMAN BODY

BODY BACK



DIAGNOSTIC REPRESENTATION OF FUNCTIONAL DISORDERS OF THE INTERNAL ORGANS OF THE HUMAN BODY

HEAD AND NECK

